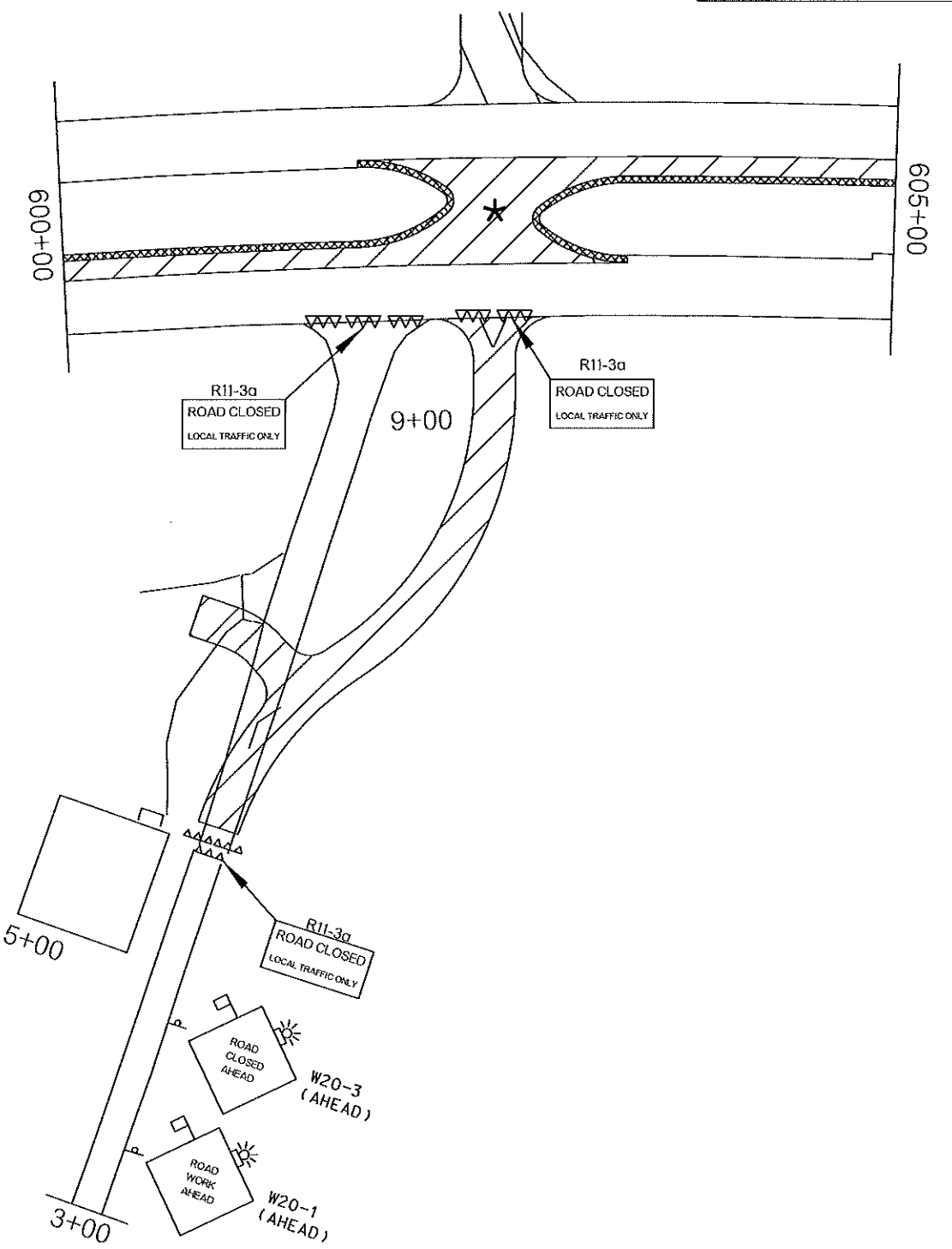
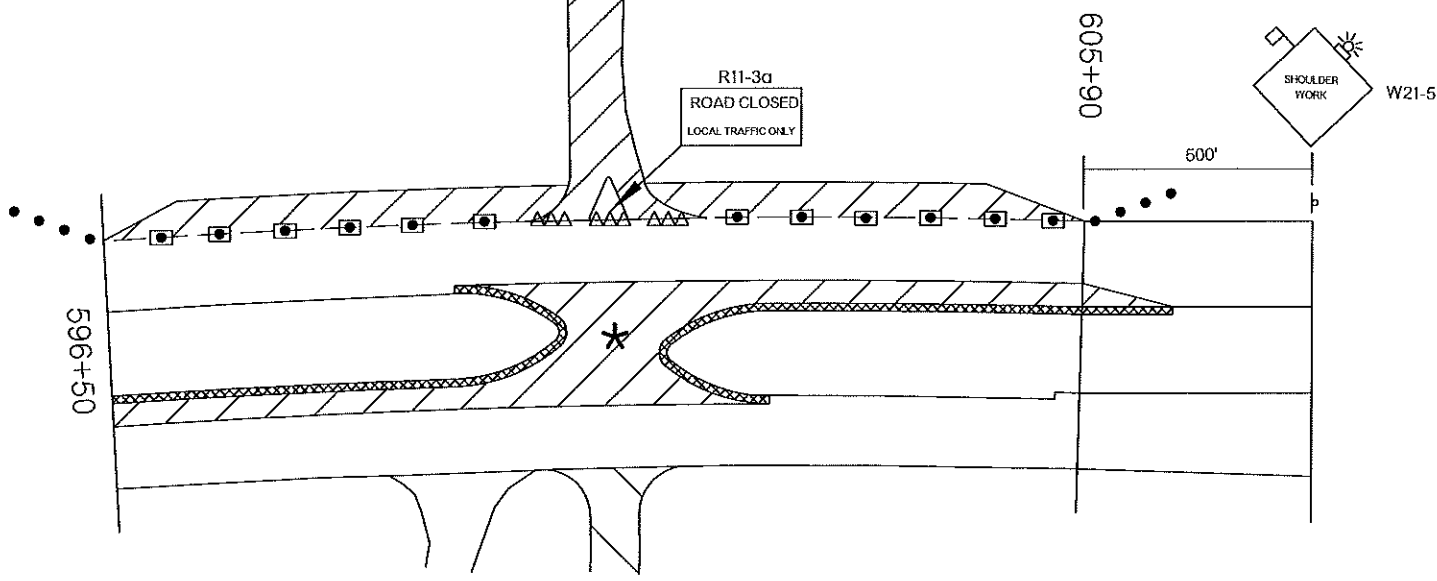
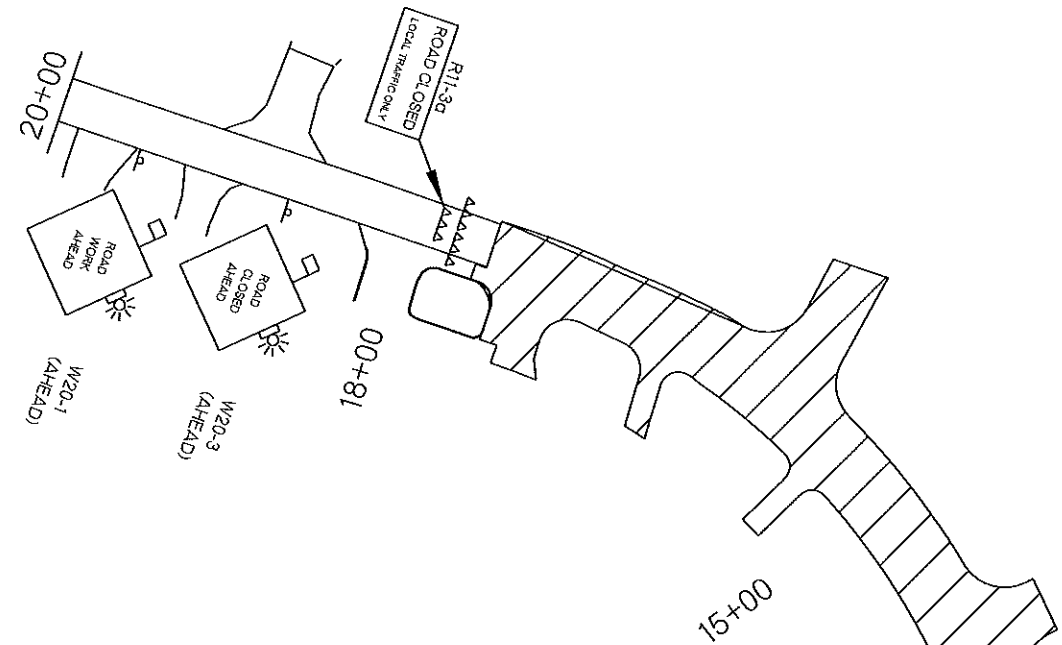


REV. NO.	DESCRIPTION	REVISIONS	DATE

THERE IS NO SUGGESTED SEQUENCE OF CONSTRUCTION IN THIS DRAWING. TRAFFIC CONTROL DEVICES, AND SIGNING SHALL BE WORKED AND IMPLEMENTED AS DIRECTED BY THE ENGINEER.

* ADVANCE WARNING AND TRAFFIC CONTROL DETAILS FOR THE MEDIAN OPENING RECONSTRUCTION IS SHOWN ON TRAFFIC CONTROL DETAIL SHEET NO. 75.



FOR ADDITIONAL INFORMATION ABOUT TAPER LENGTHS AND SPACING OF CHANNELIZING DEVICES, SEE STANDARD DRAWING TCS2-1-(LATEST REVISION).

- KEY:
- SIGN
 - TYPE III BARRICADE
 - WORK AREA

DRAWING NOT TO SCALE

TRAFFIC CONTROL DETAIL US-62 & 2 MILE RD		Drawn	RGN	2/16
		Design	RGN	2/16
STATE OF OKLAHOMA		Checked	JLS	2/16
		TRAFFIC ENGINEERING JAMI SHORT		
DEPARTMENT OF TRANSPORTATION		STATE JOB NO. 27958(04)		
DIVISION 1		SHEET NO. 80		
MUSKOGEE COUNTY US-62				